

COMPANY PROFILE

HUA-JIE



台灣華傑股份有限公司

HUA-JIE (TAIWAN) CORPORATION

Switch , Acoustic Components , Sensor

Contents

- 1 Company Introduction
- 2 Company Philosophy
- 3 History
- 4 Quality & Factory
- 5 Products
- 6 Performance



Company Introduction

HUA-JIE (TAIWAN) Corp., have more than 30 years of production and R&D experience. Our switches have been widely used in various electronic machinery °



Establishment : June 27, 1989



Headquarter : Taiwan Taoyuan



Chairman and CEO : Samuel Chen



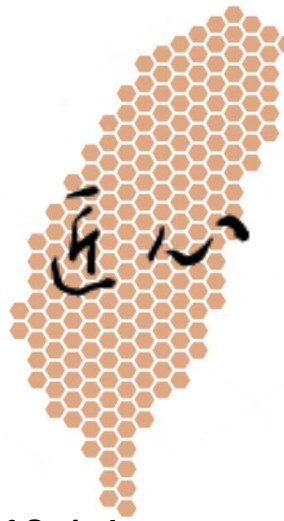
Employees: 66 in Taiwan, 800 in the group



Capital: NTD 200 million (USD 7.2 million)



Products: Tact Switch, Micro Switch, Waterproof Switch, Metal Push Switch, and Acoustic Components

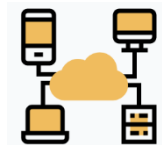


Samuel Chen

Technology, Trust and Quality are HUA-JIE's vision.
"HUA-JIE" launched its own brand and became the leader in the switch industry with professional production technology.

To fulfill our vision:

- ✓ A leader in new technology.
- ✓ World quality manufacturer.
- ✓ Customer's best partner.



公司理念

Company Vision

技術

Technology

誠信

Trust

世界品質

Excellent Quality

HISTORY

1989

was established and being trading electronic components from China while exporting factory equipment.

1994

Tao-Yuan, Taiwan factory was established for manufacture of TACT SWITCH.

1997

- Received ISO9002 certification.
- Developed TSVR Technology & Designed TSDR for SONY

1999

Developed Long Life Switch and Encoder Switch for LOGITECH

2002

IPO in Taiwan

2003~2005

- All the Hua-Jie plants passed ISO9001 certification.
- Suzhou Hua Jie plant passed ISO 14000 certification
- Named green partner of Samsung Group

1993

Developed the Automatic Equipment for Tact SW & TST Technology.

1996

Developed fully automated SMD & DeFLUX technology and cooperate with PANASONIC

1998

- Developed Rotary Switch for UMAX
- Design Detector Switch (DSDA-001) for ASUS.
- Set up HUA-JIE SuZhou Plant.

2000~2001

- Developed Side push switch on cell phone applications for MOTOROLA
- Hua-Jie merged Himake & PAC and extend to Micro switch & acoustic products.

2007

- Yangzhou ZhanSheng Plant established.
- Xiamen plant passed ISO/TS16949

HISTORY

2009

Consolidated
Xiamen plant and
Dongguan plant,
and moved to new
plant in Xiamen

2010

Cooperated with HP and
Lexmark on new Micro
switch projects.

2012

Open cleanroom
in Taiwan
CISCO chose LP6 series for
network.
Yueqing plant was established
for manufacture of Micro
switch .

2016

PAC-ST-04BH-P applied
on Boston Scientific
S-ICD Device
TS43 and TSSD series
applied on TECHNICOLOR
Set-top box .

2017~

Suzhou Plant
ISO/TS16949

TAIWAN K2 IATF 16949

2019~

Vinfast electric scooter
uses PAC-SP-4010 series
LS3E series applied to
Vestel TV

Cooperation with HONDA
to develop automotive
switches

2020

VM series applied on
Arcelik Dry machine.

LR01 series applied on
Beko refrigerator

2021

TST series applied on
ZOJIRUSHI 、 TIGER IH electric
pot

TSIB 、 USB applied on Dell
computer

管理系統認證	台灣華傑	廈門漢元	蘇州華杰	樂清工廠	揚州工廠	常州工廠	宿遷工廠
Management System	K2 Factory	Xiamen Himake	Suzhou Factory	Yueqing Factory	Yang Zhou Factory	Chang Zhou Factory	Suqian Factory
ISO 9001: 2015	V (SGS)	V (CQC)	V (CQC)	V (CQC)	V (CQC)	V (CQC)	V (CQC)
ISO 14001: 2015	V (SGS)	V (CQC)	V (CQC)				
ISO 45001: 2018	V (SGS)		V (EICC)				
IATF16949: 2016	V (SGS)	V (CQC)	V (CQC)				

All products conform to and superior to RoHS 2.0 、WEEE 、halogen free and packaging Materials directive requirements , So REACH does not apply , but is listed as a high concern .

- RoHS (Electrical restriction)
- REACH (Chemicals)
- WEEE (Waste Electrical)



Taiwan Smart Factory

K2 Smart Factory

HUA-JIE 



Established in 2012



Factory area 200 sqm



Approx. 40 employees



Supplying over 500 million ultra-thin switches in a year.



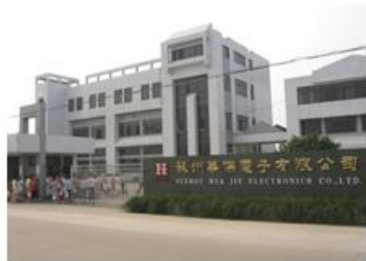
Overall Efficiency, Quality, and Innovation

- ✓ With self-developed automatic ultra-thin switch assembly line and inspection equipment.
- ✓ Producing in 2 shifts for 24 hours.
- ✓ Monthly production capacity is up to 45 to 50 million pieces of switches.

Suzhou factory, China

HUA-TAC

HUA-JIE



Production Items

- Tact Switch
- Push Switch
- Detector Switch
- Slide Switch
- Dome Array

Xiamen Factory, China

HiMAKE

HUA-JIE 



Productions Items

- Micro Switch
- Power Switch
- Rocker Switch
- Keyboard Switch

Yueqing Factory, China

Micro switch

HUA-JIE



Yangzhou Factory, China

METAL SWITCH

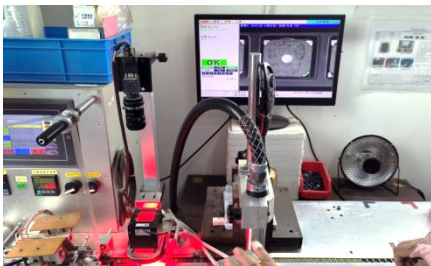
HUA-JIE



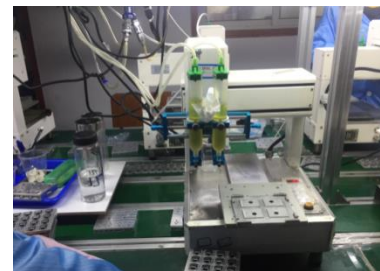
Changzhou Factory, China

PAC Buzzer, Speaker, MIC

HUA-JIE



Wong Cheng

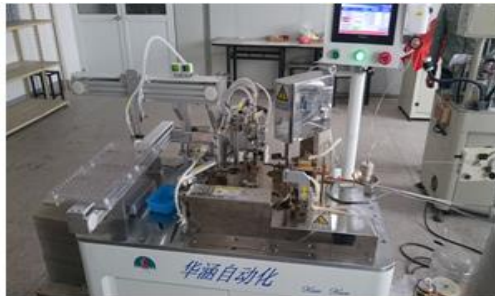


Suqian Factory, China

PAC

Buzzer

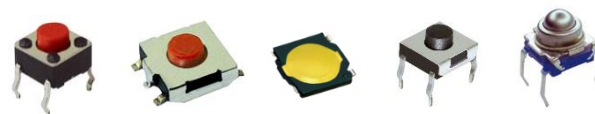
HUA-JIE



Hsu Hung Wei



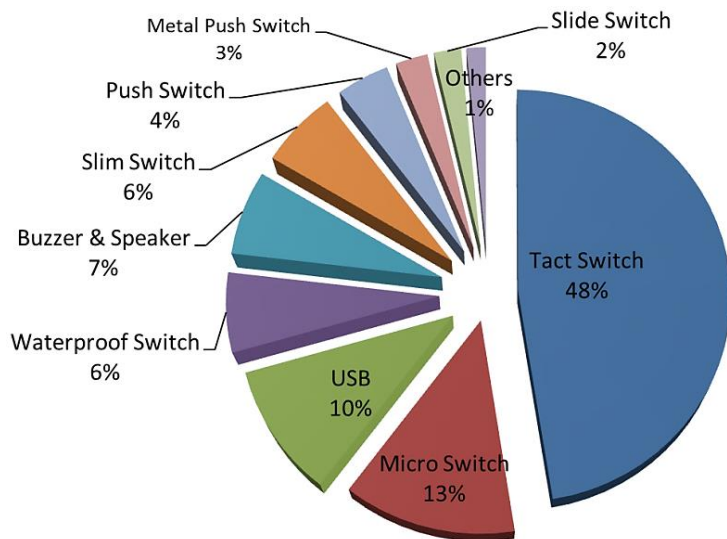
產品應用 *Product Applications*



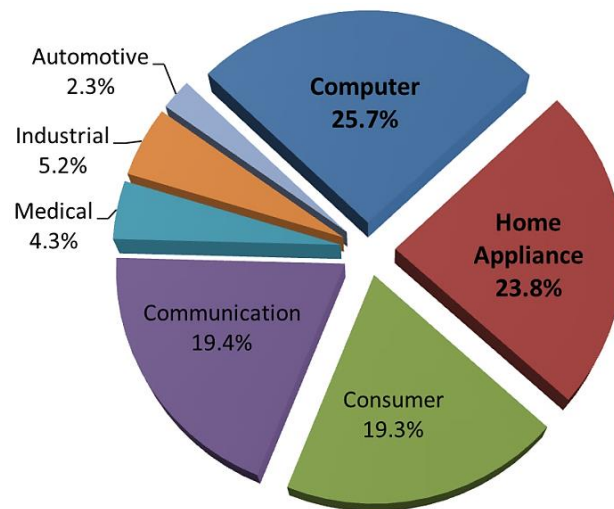
Performance can be seen in all major product areas and have a very high market share

- Micro Switch and Slide Switch are applied by Mouse of PC and Laptop, supplying to Logitech and Microsoft.
- Waterproof Switch are applied by WM and Dishwasher; supplying to BSH, Whirlpool, Samsung, Haier, Panasonic, Arcelik & Electrolux.
- Tactile Switch are applied by wide range of markets: for Set-up Box, we are supplying to SKY, ARRIS, and Technicolor.

Sales ratio



Application Industries





主要客戶 Major Clients

CEM

FOXCONN®

PEGATRON

FLEXTRONICS

Chicony



SANMINA



SELCOM GROUP

ASRock
华擎科技

BenQ Qisda



Quanta Computer

JABIL



HQ HUAQIN
华勤通讯

BITRON

Celestica 



主要客戶 *Major Clients*

HUA-JIE

COMMUNICATION



COMPUTER



BenQ

LEXMARK

EPSON

acer

logitech



ASUS

Canon



CAR DEVICE



HONDA



ISUZU



TOYOTA



CHEVROLET



SYM



YAMAHA



KYMCO



TATA



VINFAST



VOLVO

主要客戶 Major Clients

HUA-JIE 

HOME APPLIANCE



Haier



SHARP



Electrolux



BOSCH



CANDY



主要客戶 Major Clients

HUA-JIE 

CONSUMER

TOSHIBA

GoPro

Hisense

TPV
TPV TECHNOLOGY LIMITED

VESTEL

technicolor

DELTA

SKYWORTH

THOMSON

ZINWELL
AUSTRALIA PTY LTD

MEDICAL CARE

 **Health & Life**
The Art of Invention

五鼎生技
ApexBio
Taiwan

OK Biotech
Co., Ltd.

TaiDoc
♥ ♥ ♥

Boston Scientific

Aethorn
FORTECH


LOOPCOMM

BIONINE



謝謝

THANK YOU